

# Technical data sheet



## Product features

### Freezing cabinet 700 l GN 2/1, stainless steel, right door

|              |                 |          |
|--------------|-----------------|----------|
| <b>Model</b> | <b>SAP Code</b> | 00014289 |
|--------------|-----------------|----------|



- GN / EN size in device: GN 2/1
- Minimum device temperature [°C]: -18
- Maximum device temperature [°C]: -22
- Insulation thickness [mm]: 60
- Control type: Digital
- Opening of device: Hinges on the right
- Automatic defrost: Yes

|                            |                    |  |        |
|----------------------------|--------------------|--|--------|
| <b>SAP Code</b>            | 00014289           | <b>Energy class</b>                    | D      |
| <b>Net Width [mm]</b>      | 693                | <b>Number of internal parts</b>        | 3      |
| <b>Net Depth [mm]</b>      | 826                | <b>Number of GN / EN</b>               | 3      |
| <b>Net Height [mm]</b>     | 2008               | <b>GN / EN size in device</b>          | GN 2/1 |
| <b>Net Weight [kg]</b>     | 118.00             | <b>Minimum device temperature [°C]</b> | -18    |
| <b>Power electric [kW]</b> | 0.879              | <b>Maximum device temperature [°C]</b> | -22    |
| <b>Loading</b>             | 230 V / 1N - 50 Hz | <b>Refrigerant</b>                     | R290   |

# Technical data sheet



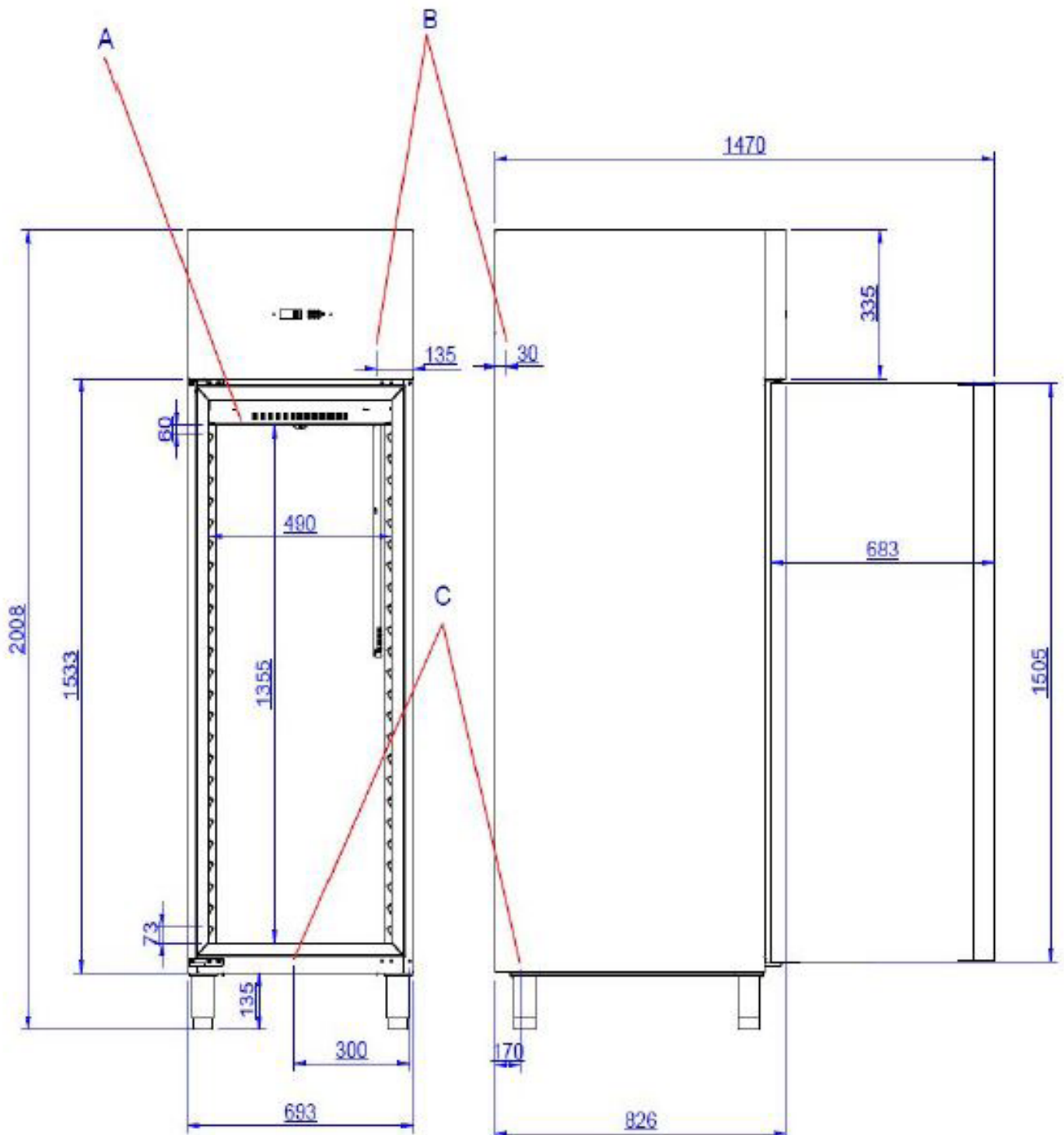
Technical drawing

Freezing cabinet 700 l GN 2/1, stainless steel, right door

Model

SAP Code

00014289



# Technical data sheet



## Technical parameters

### Freezing cabinet 700 l GN 2/1, stainless steel, right door

|              |                 |          |
|--------------|-----------------|----------|
| <b>Model</b> | <b>SAP Code</b> | 00014289 |
|--------------|-----------------|----------|

**1. SAP Code:**

00014289

**2. Net Width [mm]:**

693

**3. Net Depth [mm]:**

826

**4. Net Height [mm]:**

2008

**5. Net Weight [kg]:**

118.00

**6. Gross Width [mm]:**

700

**7. Gross depth [mm]:**

850

**8. Gross Height [mm]:**

2150

**9. Gross Weight [kg]:**

149.00

**10. Device type:**

Electric unit

**11. Power electric [kW]:**

0.879

**12. Loading:**

230 V / 1N - 50 Hz

**13. Energy class:**

D

**14. Refrigerant:**

R290

**15. Cooling type:**

Dinamic

**16. Material:**

Stainless steel

**17. Additional information:**

The shelves are removable and adjustable

**18. Device properties 2:**

Freezing

**19. GN / EN size in device:**

GN 2/1

**20. Number of internal parts:**

3

**21. Number of GN / EN:**

3

**22. Adjustable feet:**

Yes

**23. Insulation thickness [mm]:**

60

**24. Opening of device:**

Hinges on the right

**25. Number of doors:**

1

**26. Unit:**

Yes

**27. Control type:**

Digital

**28. Minimum device temperature [°C]:**

-18

# Technical data sheet



Technical parameters

Freezing cabinet 700 l GN 2/1, stainless steel, right door

Model

SAP Code

00014289

**29. Maximum device temperature [°C]:**

-22

**31. Thaving cycle:**

Yes

**30. Automatic defrost:**

Yes